

"If a picture paints a thousand words"



We've kept the country... Naturally.

*...of panoramic landscapes and
picturesque sunrises*



Shot on location at Sungai Buloh Country Resort

Sungai Buloh Country Resort is an idea developed with nature in mind.

Designed as a true sojourn to country resort living, Sungai Buloh Country

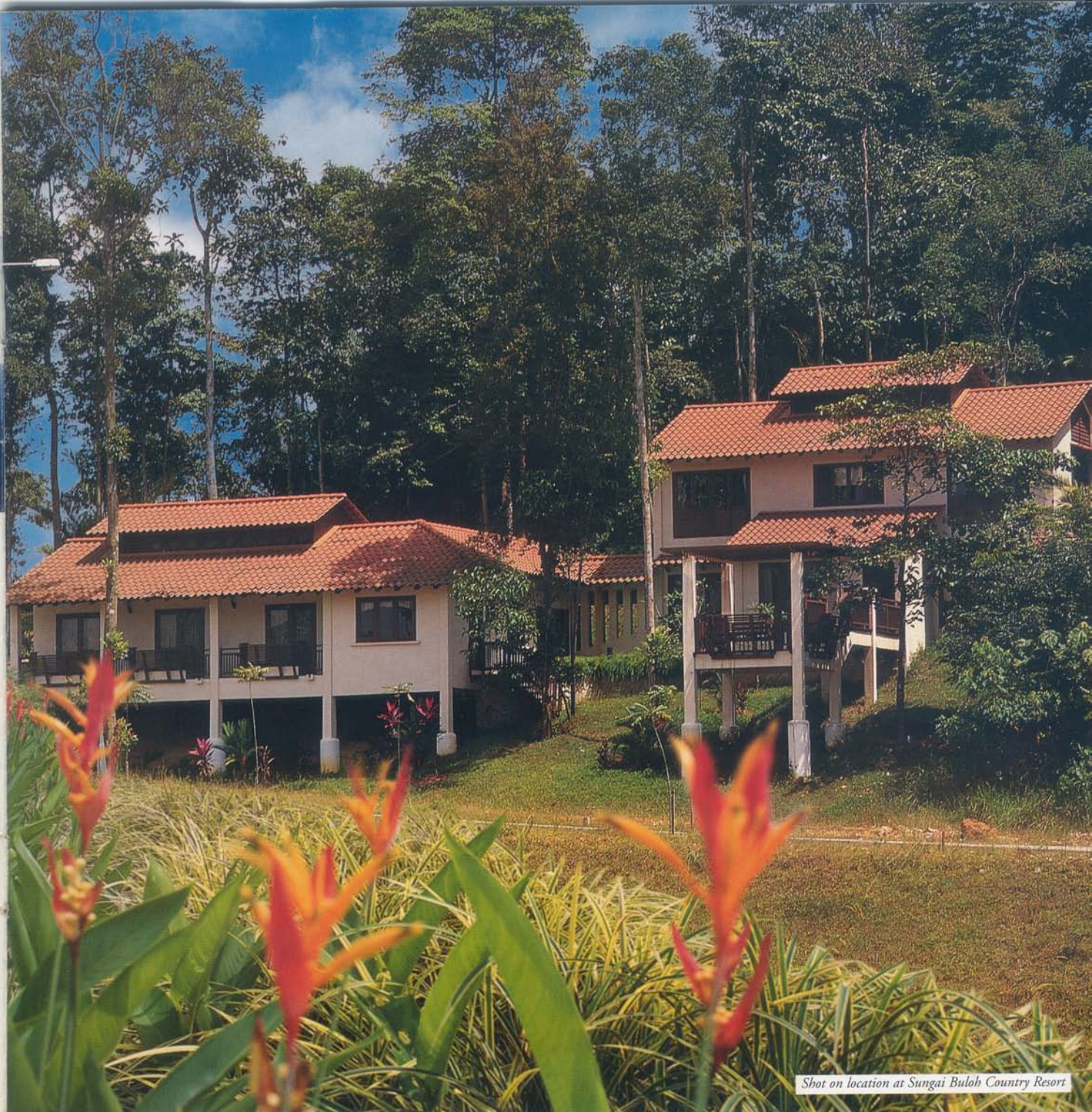
Resort is sprawled over 627 acres of secondary forest laced on gentle rolling hills and spacious flatlands. Crowned only by panoramic landscapes and picturesque sunrises, Sungai Buloh Country Resort is idyllic, serene and tranquil, ideally for perceivers of "l'amour de la vie" - the love of life.



Shot on location at Sungai Buloh Country Resort

Country Resort

Resort



Shot on location at Sungai Buloh Country Resort

...caters to your every need

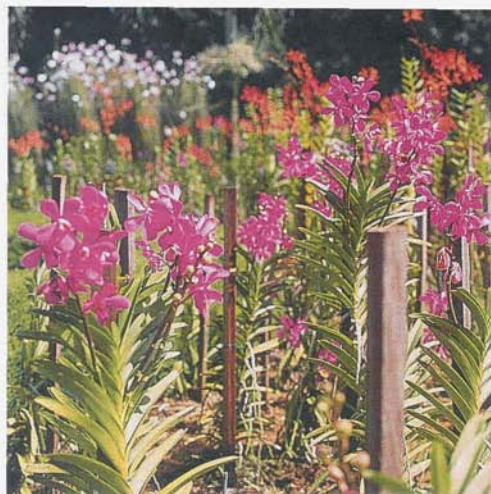
A clubhouse just a few minutes away by car or on horseback, caters to your every need. Sporting facilities such as swimming and wading

pools, jacuzzi and sauna; racquet sports with ITF standard tennis, badminton and SRAM approved squash courts; and outdoor basketball courts. A fully-equipped gymnasium and games-room, surau and pro-shops complement the clubhouse's leisure facilities. A club coffeehouse serves mouth-watering dishes to tempt your palate, while gala function rooms and facilities allow you to play host at graceful social gatherings.

Complementing nature are the tended orchid farms and dedicated fruit orchards, lending both beauty and a sense of *dusun kampung**

to Malaysia's first residential country resort. Enhancing your dream home setting is 24 hour security patrol and dedicated security checkpoints complementing site boundary fencing to capture that elusive peace of mind.

* village orchards





Artist's impression of club house

*...the finest facilities,
character and convenience*

Rustic stables of the Elmina Equestrian Centre form picture postcard settings against nature. This biggest and first integrated equine centre in South East Asia is equipped with the finest equestrian sporting and recreational facilities. Riding for recreation or the challenge, cross-country or trail riding, professional or amateur racing, dressage or showjumping, the Elmina Equestrian Centre is a venue for international equestrian events.

A commercial centre built in the form of an old wild west cowboy town adds character as well as convenience. Served by the resort's advanced fibre optic telecommunications system, the cowboy town is a designated *cyber-village*.



Shot on location at Sungai Buloh Country Resort.



Shot on location at Sungai Buloh Country Resort.



ort

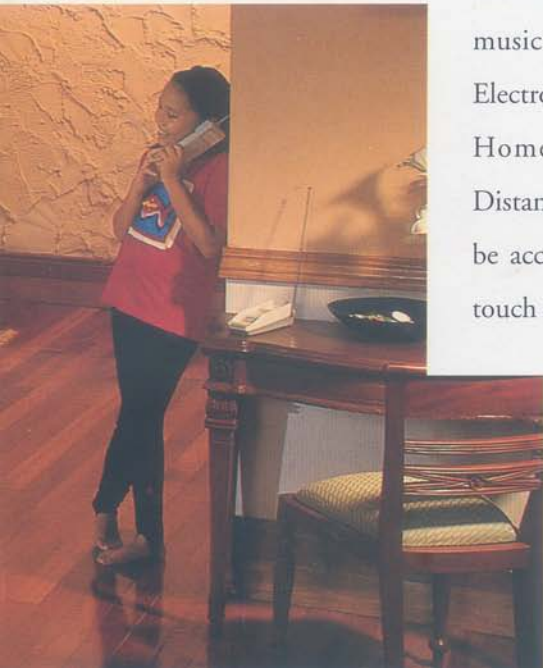
dds
otic
boy

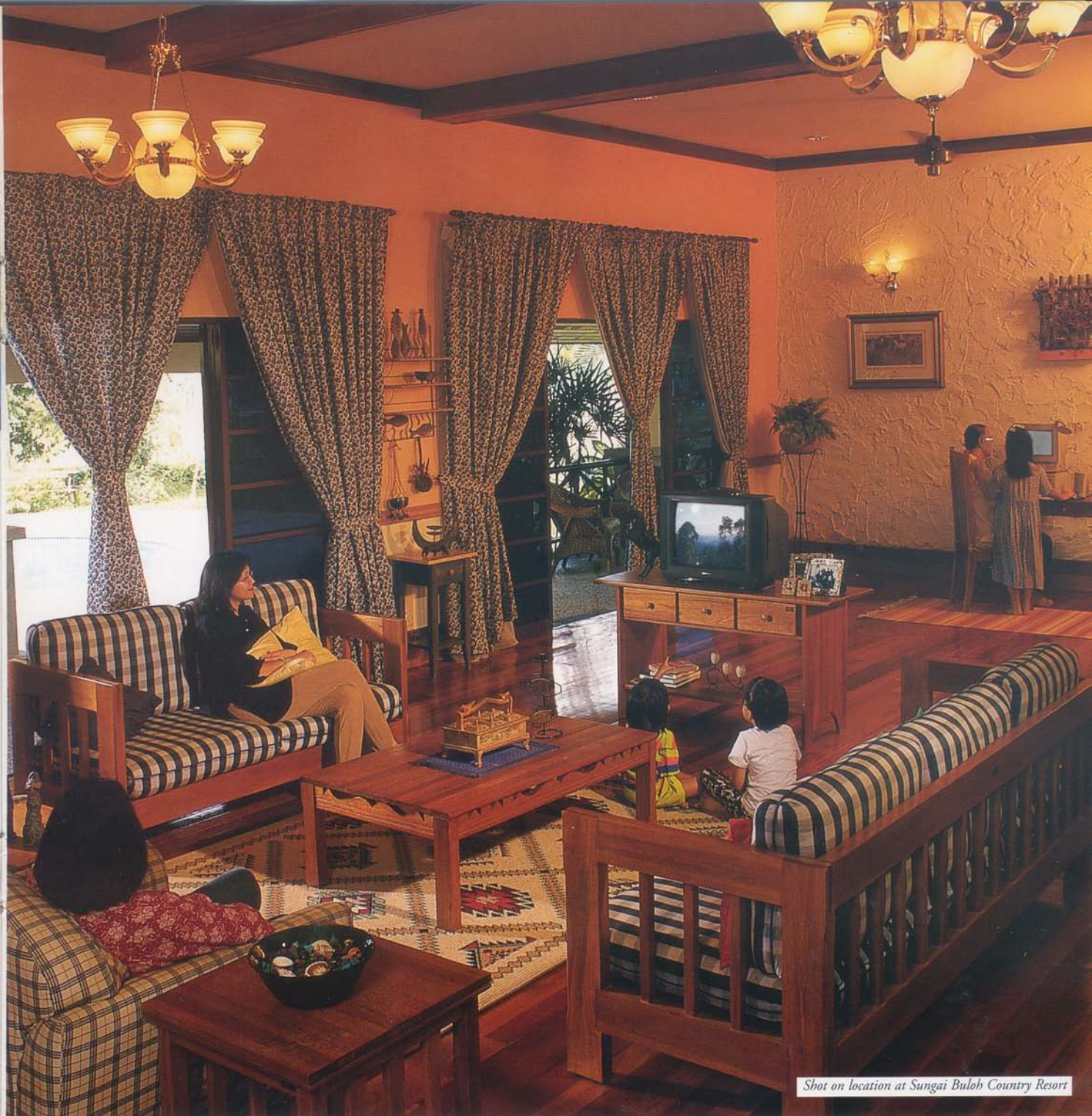
try Resort

Shot on location at Sungai Buloh Country Resort

*...naturally sophisticated and
technologically advanced*

The natural setting veils a highly sophisticated and advanced telecommunications system that serves the resort. Advanced fibre optic cables laid underground provide future interactive services to keep you in touch and on-line with the conveniences of modern technology. One line delivering cable TV, telephone and multimedia to your home providing crystal clear phone services, non-stop blockbuster movies, cartoons, sports features, music television. Services such as Electronic Commerce, Home Banking, Home Shopping, Telemedicine, Distance Learning and many others will be accessible from home with just the touch of a finger.





Shot on location at Sungai Buloh Country Resort

...conveniently accessible

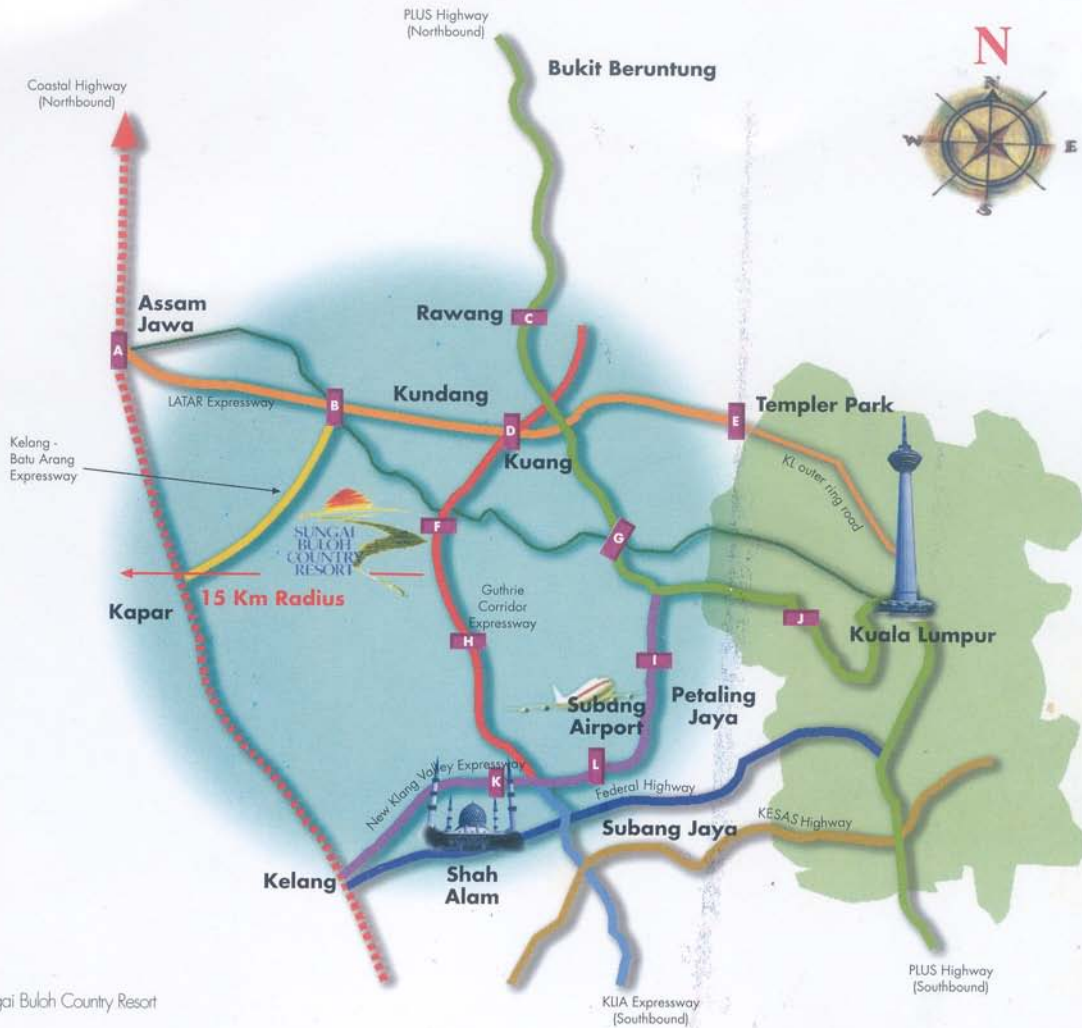
The Sungai Buloh Country Resort is tucked away on the outskirts of Kuala Lumpur, a half hour's drive from the city, amidst gentle meadows and green foliage. In the immediate vicinity is the new Sungai Buloh General Hospital; 'smart', public and international

schools; a golf club of international standards, business centre, shopping malls, financial institutions and a KTM Kommuter Station. The Klang Valley is conveniently accessible via the New Klang Valley Expressway whilst planned

and approved road linkages such as the Guthrie and LATAR Expressways will bring Shah Alam, Klang, Subang Jaya and Petaling Jaya within a carefree 10-minute drive.



Shot on location at Sungai Buloh Country Resort



SBCR - Sungai Buloh Country Resort

- | | | | | | |
|---|---|---|---|---|--|
|  | Federal Territory |  | PLUS Highway |  | Elmina Interchange
(2 km to SBCR)
10 minutes to SBCR upon completion |
|  | KESAS Highway |  | KL - Kuala Selangor Road |  | Sungai Buloh Interchange |
|  | Kelang - Batu Arang Expressway |  | Proposed Coastal Highway |  | Subang Estate Interchange
(8 km to SBCR) |
|  | New Klang Valley Expressway |  | Assam Jawa Interchange |  | Damansara Interchange |
|  | Federal Highway |  | Ladang Yew Hock Interchange
(6 km to SBCR) |  | Jalan Duta Interchange |
|  | 25 km Guthrie Corridor Expressway
Shah Alam To Rawang
(targeted completion by 2001) |  | Rawang Interchange |  | Shah Alam Interchange |
|  | 31 km LATAR Expressway
Templer Park To Kuala Selangor
(targeted completion by 2001) |  | Kuang Interchange
(7 km to SBCR) |  | Subang Interchange |
| | |  | Templer Park Interchange | | |